

Schib® CO 130 INT Flow Wrapper



Features

- Intermittent motion HFSS technology
- Continuous motion version available on demand
- Suited for a wide range of food and non-food products
- Ideal for the non-food industry, it can run a variety of items including tall, long, and heavy products as well as product kits
- Fast, repeatable changeovers will allow short production runs and/or frequent product changeovers
- 550 mm film width (900, 1200 or 1400 mm as an option)
- Greater labor productivity, greater machine efficiency
- Lower cost per bag produced
- Low maintenance, reduced parts inventory
- Ready for integration into packaging lines interfacing with other automated equipment

Schib® CO 130 INT Flow Wrapper

The Schib CO 130 INT Flow Wrappers featuring Intermittent Motion HFFS Technology are extremely flexible and dependable. This series of machines is suited for a wide range of food and non-food products.

This equipment performs particularly well in the non-food industry, as it can run a variety of items including tall, long, and heavy products as well as product kits. Automotive, hardware and electrical components, plastic, pharma/medical items are just some of the major applications.

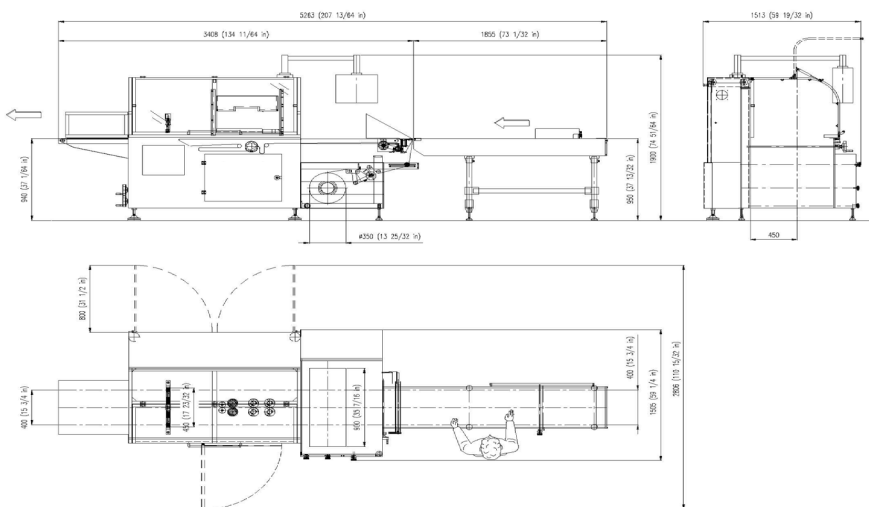
Several sealing systems are available for the most diverse film structures: OPP, PP laminates, LDPE, HDPE, LDPE/HDPE foam laminates, LDPE "bubble wrap", and shrink materials including Polyolefin-type.

Production rate go up to 25 wraps/minute, depending on product length/weight.

A Continuous Motion version is also available on demand, running up to 40 wraps/minute, depending on product length and weight.

Feature	Standard	Optional
Min./Max. product dimensions	Length 50 / 1500 mm Width 5 / 200 mm Height 1 / 120 mm	10000 mm on request Up to 400 mm Up to 200 mm
Performance	25 ppm	40 ppm
Film roll width	550 mm	900 / 1200 / 1400 mm
Film roll max. ext. dia	350 mm	
Sealing head	Guillotine-type	Box-motion
In-feed conveyor useful length	1500 mm	On request
Automatic film splicer	No	Yes
HMI control panel	7" color touch-screen	10" color touch-screen
Program storage	49 programs	99 programs
Diagnostics	Yes	
Machine finishing	Painted RAL 9007	Stainless steel
No product - no bag	Yes	
Wrapping materials	Heat sealable OPP - BOPP - COEX - Laminate	LDPE, HDPE, LDPE/HDPE foam laminates, LDPE "bubble wrap", and shrink materials including Polyolefin-type
Installed / absorbed power	3 / 1,5 kW	
Weight	1200 kg	
Feeding system	Manual	Automatic
Machine dimensions	5300 x 1500 x 1900 mm	

We reserve the right to make technical changes without prior notice.



Guillotine-type or box-motion cross sealing system



Heavy-duty lower carrying belts



Bottom film feeding

bwflexiblesystems.com

Global Operations

Duncan | SC | 29334 USA
t. +1 (864) 486 4000

Nottingham | NG9 1LA UK
t. +44 (0) 115 967 8787

Mestrino (PD) | 35035 ITALY
t. +39 049 9006511

Monte di Malo (VI) | 36030 ITALY
t. +39 0445 602300

Hayssen | Rose Forgrove | Sandiacre | Schib | Simionato | Streamfeeder | Symach | Thiele

BW Flexible Systems is a global manufacturer of packaging systems that fill and bag thousands of food and non-food products. Our packaging systems are designed and manufactured to maximize the efficiency and lifetime value of our customers' packaging lines. Our range of machinery includes form-fill-seal, feeding, bag filling and sealing, pouch-making equipment, flow-wrap, reclosable packaging solutions, palletizing, stretch-wrapping and more. For more information, go to bwflexiblesystems.com

2022/04

barrywehmiller
bw
betterworld